

AGENDA
LAVACA REGIONAL WATER PLANNING GROUP
Regular Meeting
December 5, 2022
12:00 p.m. (Noon)

Meeting will be held in person at the Main Office of the Lavaca Navidad River Authority Office Complex, 4631 FM 3131, located approximately seven (7) miles east of Edna.

You may also access the meeting through audio/video conferencing: <https://bit.ly/3EgoGNR>

1. Open meeting.
2. Receive public comments.
3. Consider approval of meeting minutes of September 19, 2022 and act as necessary.
4. Consider nominations for new voting members and act as necessary.
5. Receive update from Texas Water Development Board (TWDB) Project Manager and act as necessary.
6. Receive reports from regional liaisons and Interregional Planning Council representative and act as necessary.
7. Receive briefing and update from Black and Veatch consultant and act as necessary.
 - A. Schedule and Progress Update
 - B. Update and Discussion on Potential Revisions to Draft Projections for Livestock, Manufacturing, Steam-Electric, Irrigation, and Mining
8. Consider approval of revisions to Draft Non-Municipal Demand Projections to submit to TWDB and act as necessary.
9. Discuss and schedule future meeting dates and act as necessary.
10. Receive public comments.
11. Adjourn



Lavaca Regional Water Planning Group




Regular Planning Group Meeting

December 5, 2022

Lauren Gonzalez
Alicia Smiley




1



Agenda Items

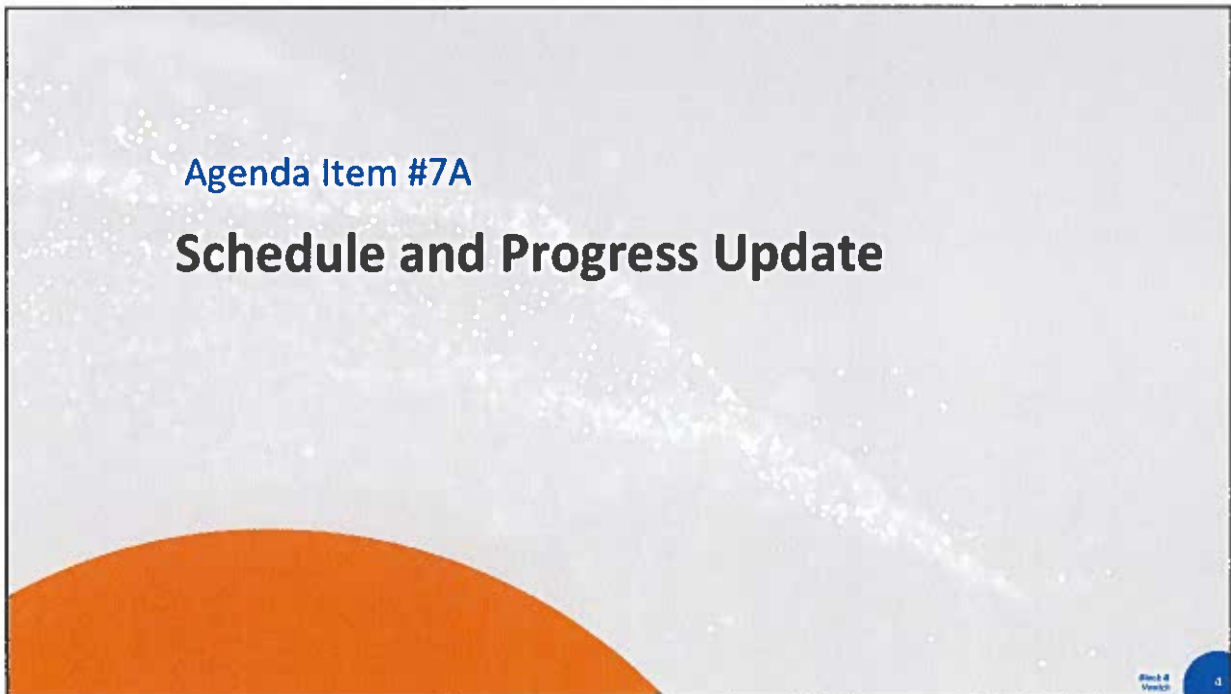
1. Open meeting
2. Receive public comments
3. Consider approval of minutes
4. Consider nomination of new voting members
5. TWDB update
6. Receive reports from regional liaisons and Interregional Planning Council reps
7. Receive briefing and update from Black & Veatch (technical consultant)
8. Consider approval of non-municipal demand projection revisions to request to TWDB
9. Schedule
10. Public Comments
11. Adjourn



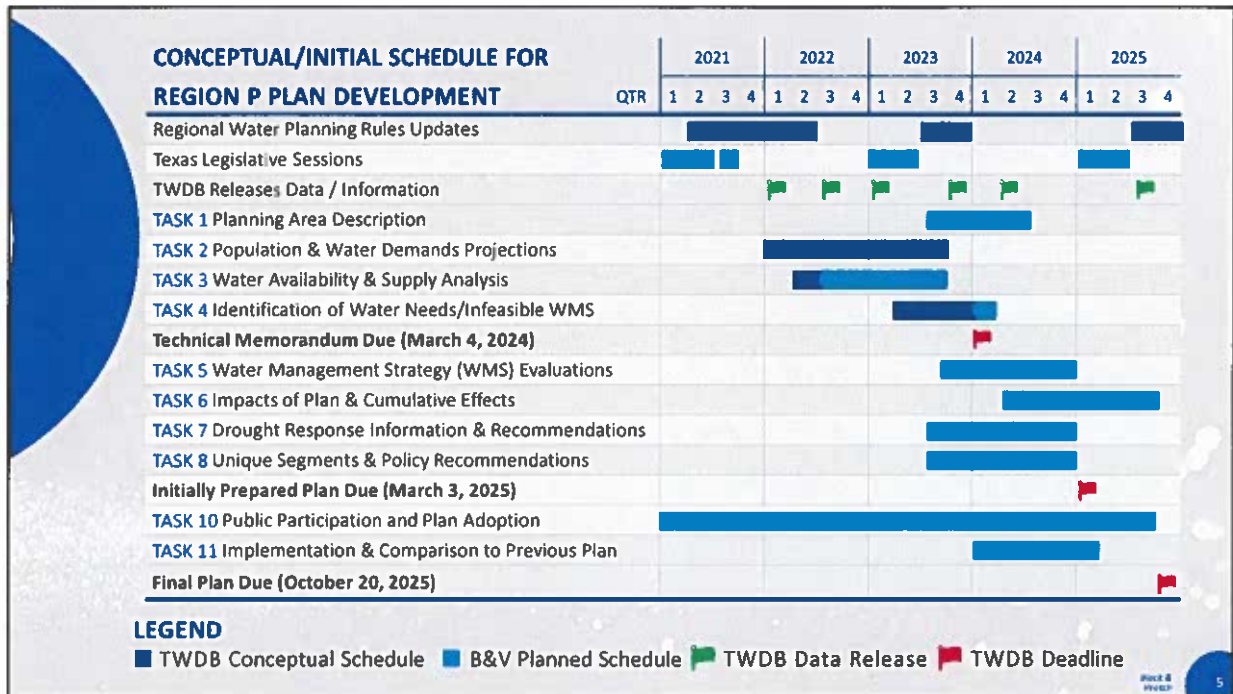
2



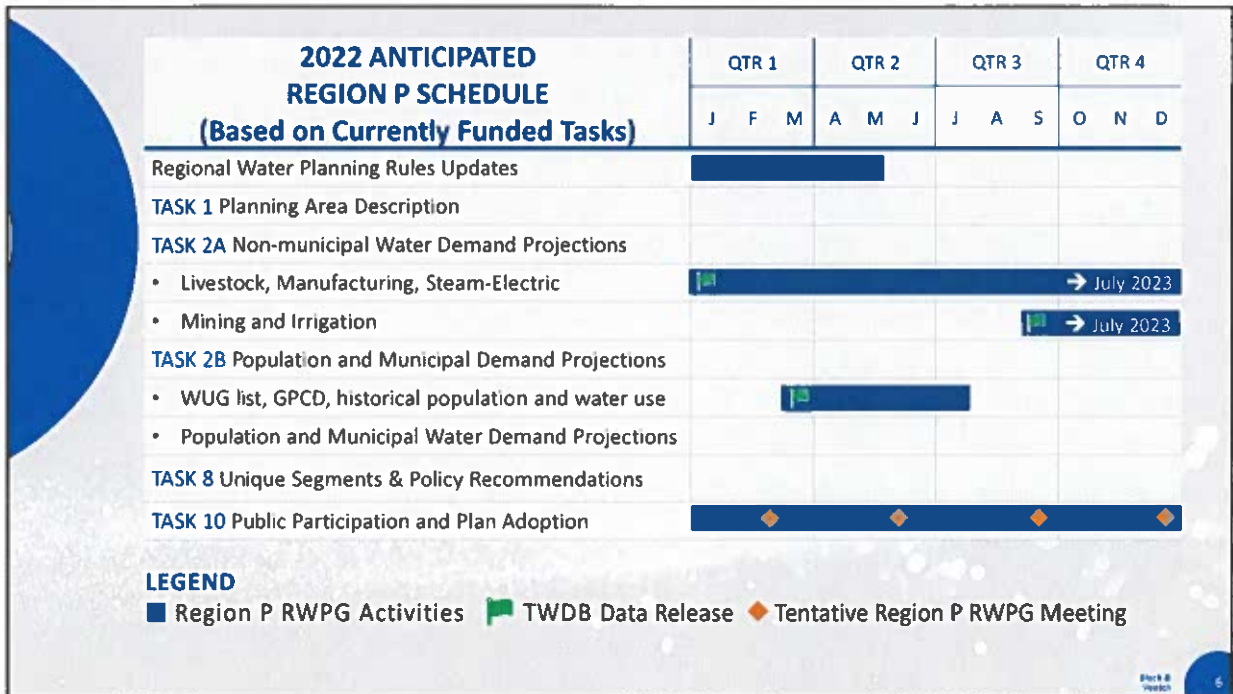
3



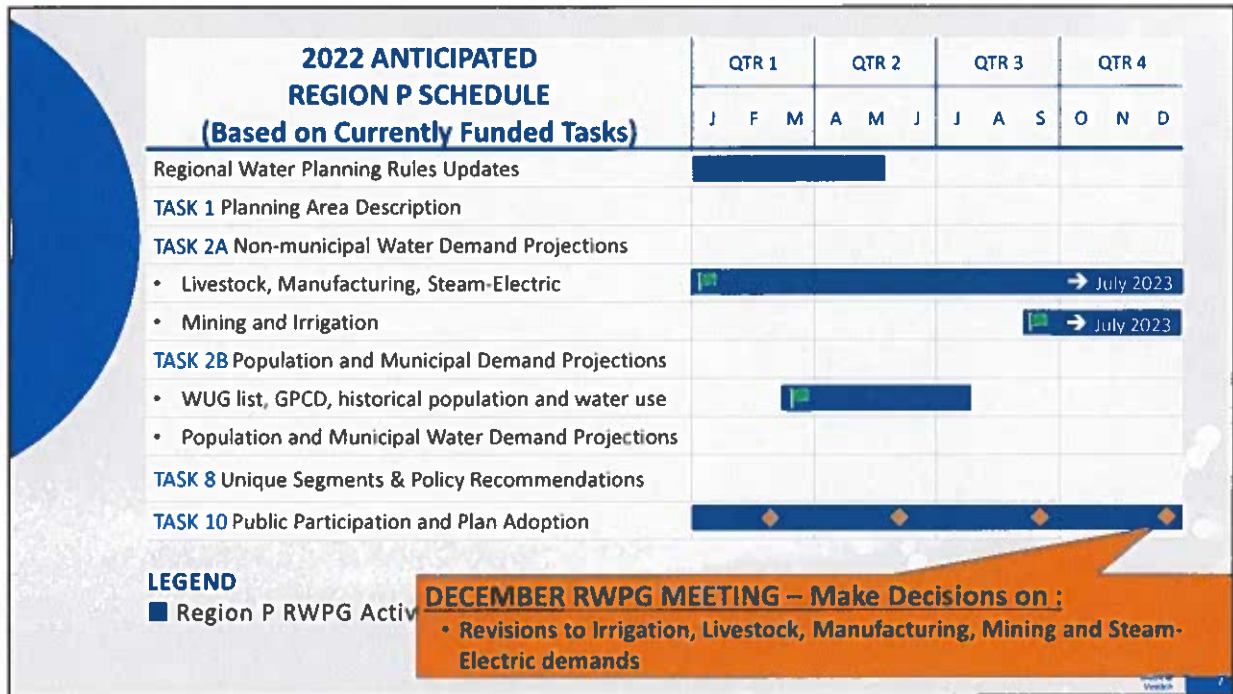
4



5



6



7

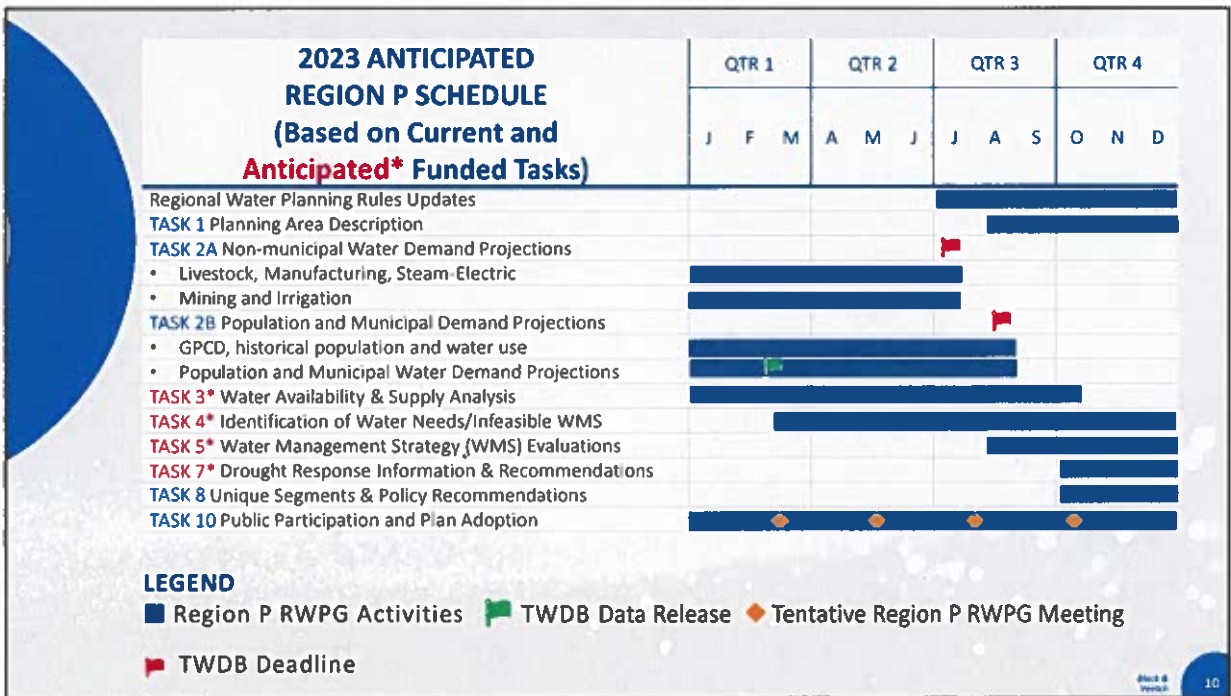
Summary of TWDB Data Releases to Date

Type	Deadline for RWPG to Review and Submit Revisions to TWDB
Water User Group (WUG) List	July 29, 2022 ✓
Historical WUG data and Draft Baseline GPCD	August 11, 2023
Water Demand Projections: Livestock, Manufacturing, Steam-Electric, Irrigation, and Mining	July 14, 2023

8

Future Data Releases and Deadlines

Type	Anticipated Release Date	Deadline for RWPG to Review and Submit Revisions to TWDB
Population and Municipal Water Demand Projections	Feb. 2023	August 11, 2023



Agenda Item #7B

Update and Discussion on Potential Revisions to Draft Projections for Livestock, Manufacturing, Steam-Electric, Irrigation, and Mining

Draft Livestock Water Demand Potential Revisions

Region	County	2026 DRAFT Regional Water Plan Projections						RWPG Revision Requests						Comment
		2030	2040	2050	2060	2070	2080	2030	2040	2050	2060	2070	2080	
P	JACKSON	704	704	704	704	704	704	1,371	1,371	1,371	1,371	1,371	1,371	
P	LAVACA	1,917	1,917	1,917	1,917	1,917	1,917	3,545	3,545	3,545	3,545	3,545	3,545	
P	WHARTON	257	257	257	257	257	257	503	503	503	503	503	503	
Region Total		2,878	2,878	2,878	2,878	2,878	2,878	5,419	5,419	5,419	5,419	5,419	5,419	

- Discussion of requesting to use 30 gal/head/day for Fed/Other Cattle instead of 15 gal/head/day
- Above table shows revision to demands based on 30 gal/head/day
 - TWDB provided data on numbers of animals
- TWDB would like to see data on water use if we have it
 - If we can't obtain, we can submit request anyway and see
 - Humidity and high temps compared to other parts of the State should increase water use rate

County	Fed & Other Cattle				
	2015	2016	2017	2018	2019
Jackson	42,376	43,663	36,332	37,959	37,957
Lavaca	88,072	89,236	100,702	103,353	103,249
Wharton - Region P	14,838	15,023	14,210	14,587	14,587

Draft Manufacturing Water Demand Potential Revisions

Region	County	2026 DRAFT Regional Water Plan Projections						RWPG Revision Requests						Comment
		2030	2040	2050	2060	2070	2080	2030	2040	2050	2060	2070	2080	
P	JACKSON	940	975	1,011	1,048	1,087	1,127	15,218	16,325	16,361	16,398	16,437	16,477	No revision requested
P	LAVACA	528	548	568	589	611	634							
P	WHARTON	33	34	35	36	37	38							
Region Total		1,501	1,557	1,614	1,673	1,735	1,799	15,779	16,907	16,964	17,023	17,085	17,149	

- Discussion of requesting to increase Jackson County demand based on LNRA/Formosa agreements
 - Contract amendment for 10,400 ac-ft/yr in Jackson County – same as last cycle
 - Additional amendment to use water from the Lake Texana Yield Enhancement Project (LTYEP) once it's online – up to 33% of the yield, assume 50% would be in Jackson County
 - 2021 Region P Plan has LTYEP online in 2030
 - Total additional demand of 14,278 ac-ft/yr in 2030 and 15,350 ac-ft/yr in 2040-2080
- No anticipated revisions to be requested for Lavaca and Wharton Counties

Black & Veatch 13

13

Draft Steam-Electric Water Demand Potential Revisions

Region	County	Historical Water Use Estimates					2021 Regional Water Plan Projections						2026 DRAFT Regional Water Plan Projections					
		2015	2016	2017	2018	2019	2020	2030	2040	2050	2060	2070	2030	2040	2050	2060	2070	2080
P	JACKSON	0	0	0	0	0	0	0	0	0	0	0	0	0	0	0	0	0
P	LAVACA	0	0	0	0	0	0	0	0	0	0	0	0	0	0	0	0	0
P	WHARTON	0	0	0	0	0	2,060	2,060	2,060	2,060	2,060	2,060	1,572	1,572	1,572	1,572	1,572	1,572
Region Total		0	0	0	0	0	2,060	2,060	2,060	2,060	2,060	2,060	1,572	1,572	1,572	1,572	1,572	1,572

- Discussion of potential revisions
 - Demand in Wharton County is the Halyard Wharton Energy Center (new facility)
 - 2/4/22 report – facility has been “shelved”
 - Options
 - Keep draft demand as-is – facility could potentially come off the shelf
 - Request to remove facility’s demands for this cycle (show as 0 ac-ft/yr) – can include next cycle if it comes back
 - Reduce demand or split to include demands in all three counties, allowing for some planning for a facility – not likely to be supported by TWDB staff

Black & Veatch 14

14

Draft Irrigation Water Demand Potential Revisions

Region	County	Historical Water Use Estimates					2021 Regional Water Plan Projections						2026 DRAFT Regional Water Plan Projections					
		2015	2016	2017	2018	2019	2020	2030	2040	2050	2060	2070	2030	2040	2050	2060	2070	2080
P	JACKSON	39,529	56,573	53,825	59,589	60,832	78,498	78,498	78,498	78,498	78,498	78,498	54,070	54,070	54,070	54,070	54,070	54,070
P	LAVACA	5,522	6,717	6,656	7,648	8,657	8,692	8,692	8,692	8,692	8,692	8,692	7,040	7,040	7,040	7,040	7,040	7,040
P	WHARTON	60,759	56,944	63,077	69,818	57,882	88,446	88,446	88,446	88,446	88,446	88,446	61,596	61,596	61,596	61,596	61,596	61,596
Region Total		105,810	120,234	123,558	137,055	126,871	175,636	175,636	175,636	175,636	175,636	175,636	122,706	122,706	122,706	122,706	122,706	122,706

- Discussion of whether to consider requesting a revision to the irrigation demands.
 - Last cycle, a revision was requested to use the average of 2011-2013, which represented the stronger drought years.

Region	County	Historical Use Estimates					
		2010	2011	2012	2013	2014	2015
P	JACKSON	43,758	87,336	49,334	98,825	71,216	39,529
P	LAVACA	5,965	9,351	9,569	7,155	7,502	5,522
P	WHARTON	67,371	103,643	78,547	83,148	81,900	60,759
Region Total		117,094	200,330	137,450	189,128	160,618	105,810

- Does the RWPG want to request the same this cycle?
- Alternative revision options?

Draft Mining Water Demand Potential Revisions

Region	County	Historical Water Use Estimates					2021 Regional Water Plan Projections						2026 DRAFT Regional Water Plan Projections					
		2015	2016	2017	2018	2019	2020	2030	2040	2050	2060	2070	2030	2040	2050	2060	2070	2080
P	JACKSON	0	0	0	0	0	70	73	55	40	26	19	0	0	0	0	0	0
P	LAVACA	1,023	373	1,035	1,982	3,812	2,544	1,860	1,416	977	537	297	2,665	2,665	2,665	2,665	2,665	0
P	WHARTON	1	0	0	0	0	18	19	14	10	7	4	0	0	0	0	0	0
Region Total		1,024	373	1,035	1,982	3,812	2,632	1,952	1,485	1,027	570	320	2,665	2,665	2,665	2,665	2,665	0

- Discussion of draft mining demands
 - No mining demands identified for Jackson or Wharton counties
 - Lavaca County historical water use:
 - Projections taken from BEG Mining Use Study
 - Oil and Gas only; no aggregate or coal
 - No current suggestions for any revisions

TWDB 2022 Mining Water Use Study



Agenda Item #8

**Consider Action to Approve Revisions
to Draft Non-Municipal Demand
Projections to Submit to TWDB**

17

Agenda Item #9

Schedule

18



19



20